

*SCOTTISH
MACHINE
KNITTERS*

SAMPLE



*NEWSLETTER
July 2007*

DATES FOR YOUR DIARY

Thursday, 9 August 2007 at 10-30 am, Committee Meeting, Parklands Centre, Alva

Saturday, 20 October 2007 at 10-00 am, Autumn Workshop, Parklands Centre, Alva

Saturday, 16 February 2008 at 10-00 am, Edinburgh Workshop, Wardie Parish Church, Netherby Road, Edinburgh

REPORT FROM THE CHAIR

It was good to see all of you at the AGM at Alva. I think the day went well and I must thank you for your support for the CART Africa appeal. I bought all the sponge bars and latch tools etc. and when I returned home Trev and I sorted and checked all the machines and instruction books and loaded them into the car. We took them down to the warehouse in Huddersfield (combining it with a visit to see our grand children and a Glen Miller concert in Manchester). The CART warehouse was quite a big place busy with people packing cardboard boxes. We left the machines with a list of what they were and I have asked for feedback, so that I can keep you informed. I have not heard anything yet but it could take a while for them to get out there, be distributed and used. Apparently CART send about 20 containers a year of aid to Africa.

While in Oldham I was asked to knit a very unusual jacket, which I have managed to do and if I can get the pattern written out and another one knitted I will pass it on to you at some point. Some of you asked for the pattern for the 3 colour blue slip stitch cardigan I had with me at the Glasgow workshop, so I have given it to our newsletter editor.

Things are not going well for the Falkirk Show. We are still having trouble booking the college. They are in the process of arranging alterations and don't want to commit themselves at the moment. Hopefully we will have something to tell you after our next meeting August 9th.

The November workshop has now become the **Autumn workshop** as it will be held at Alva on 20 October. **If any of you have any preferences as to demonstrations please let one of us know** and we will try to oblige.

Enjoy your summer break.

Joining yarn on a cone

When winding yarn onto a cone or ball, if you come across a knot or have to join the yarn, knot a short length of contrast yarn between the join so that when knitting you see the end coming up and can make sure it is at the end of a row or if you overrun the join you can undo the row and your stitches have not fallen off, just knitted in a different colour.

Pat Fountain

Membership reminder

My 3 years in this capacity is now finished, but may I say that I have thoroughly enjoyed doing it.

However I have one last task and that is to remind anyone who hasn't renewed their membership that this will be the last Newsletter sent out to you. If you want to renew please send your subscriptions to the new Membership Secretary - Ann McCulloch - her address is on the inside of the front cover.

Hope you all enjoy your knitting over the summer.

Irene Murrie
Retiring Membership Secretary

WELCOMING NEW MEMBERS

The Association would like to welcome the following new member who have joined SMK since the beginning of 2007

Elfie Bachinger	Paisley
Sue Richardson	Edinburgh
H.Bentham	Inverurie
Susan Thornley	Port of Monteith
Helena Speirs	Edinburgh
Vilma Sutherland	Edinburgh
Irene Edgar	Cumbernauld
Jean Rae	Dunblane
Kath Simpson	Crieff
Isabel Johnstone	Coalsnaughton

HINTS AND TIPS

Straightening Yarn.

Reading Jill's article on straightening yarn, in the September 2006 Newsletter, reminded me when I tried to do it in the microwave. The ball of wool and a cup of water were placed inside and sure enough everything became all nicely steamed up. After the 'ping', sitting there was a ball of straight looking wool. However, I had forgotten that microwaves cook from the inside out, so the centre of the ball was cooked to a frazzle!

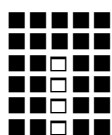
I am sure this method would work, but have not had the courage to try it again. Can anyone tell me about 'COOKING TIMES'?

Irene Murrie

BRAIDS AND TRIMS PATTERN

Tuck stitch

- a) Stitch pattern.(stitch world 310 or 703). Tension fairly tight.

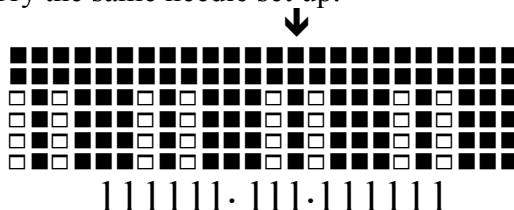


∅ = centre of machine. • = needles out of work.

7 Needle set up.	11 • ∅ 1 • 11	small.
11 Needle set up.	1111 • ∅ 1 • 1111	small and thick.
15 Needle set up.	11111 • • ∅ 1 • • 11111	large.
17 Needle set up.	111111 • • ∅ 1 • • 111111	large and thick.

- b) Stitch pattern Stitch world No. 276, the first 6 rows of the pattern. Try the same needle set up.

- c) Centre of the machine Try the same needle set up.

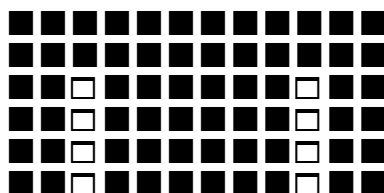


↓ = centre of the machine.

Work over these 13 needles for tuck braid, or over 11 or 15 needles.
For punchcard repeat these 6 rows, 6 times = 36 rows.

Have fun trying the different needle combinations, by using the different needle set ups and tuck stitch, there are many different braids that can be made and if by chance you do something different with the card and tuck stitch, **write down the method at once!!**

Tuck stitch and cable braid :- stitch pattern.



1. Cast on in waste yarn and knit 10 rows, change to main yarn
2. E wrap 12 needles.
3. Set for tuck. Knit 5 rows.
4. Cable over 5 and 6, 7 and 8 needles. (could use the magic cable technique)
5. Knit 6 rows.
6. Repeat to the required length. Use weights if required.

For a punch card machine you would have to punch out the full card

THREE COLOUR BLUE SLIPSTICH CARDIGAN THAT SOME OF YOU ASKED ME FOR AT THE GLASGOW WORKSHOP

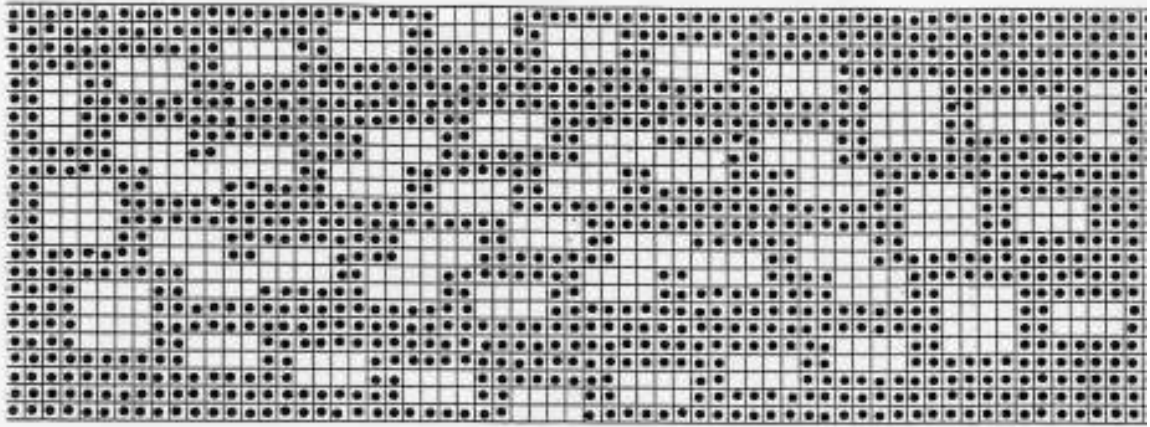
As it is one of my diagram patterns I will just add a few words to help you understand it. If you still have problems phone or e-mail me. The back and front are knitted alike and the front cut along the dotted line and cut and sew bands attached.

Cast on with w/w and then in main yarn, tension 3, work a 40 row stocking stitch hem. Tension 6, continue in slipstitch pattern changing colour every 2 rows for 320 rows. At armhole cast off 6 sts beg of next 2 rows
Then decrease 1 st at each end of every 4th row until 106 sts (RC 450)
Continue straight to RC 500 and strip off onto w/w.

Sleeves. Cast on 60 sts with w/w, change to slipstitch pattern and increase 1 st at each end of every 6th row until 116 sts, then continue straight to RC 280
Cast off 6 sts at beg of next 2 rows, then decrease 1 st at each end of every 4th row until 40 sts (RC 410) cast off.
Pick up bottom of sleeve onto 54 sts and knit 30 row stocking stitch hem Tension 5 to finish sleeve.

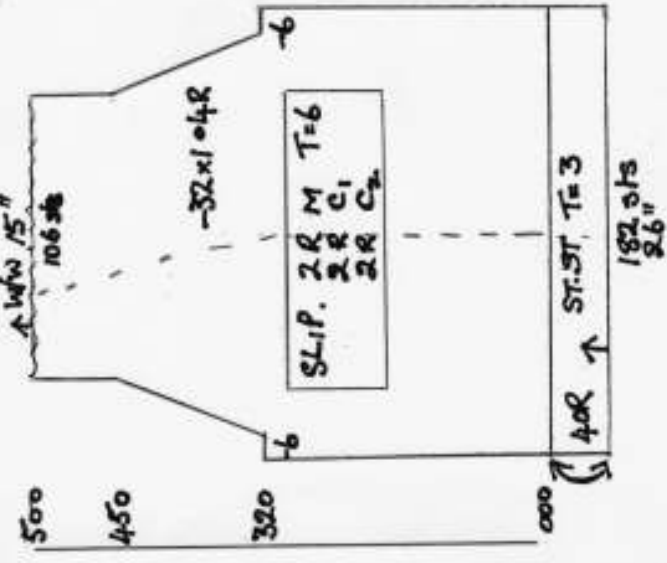


FOR ELECTRONICS OMIT 2 ROWS OF HOLES EACH END



3 COLOUR SLIP STITCH.

2 ends 4 light → 300 2 x 3 rows. 800 T=6



T=6

28 sts
40 sts

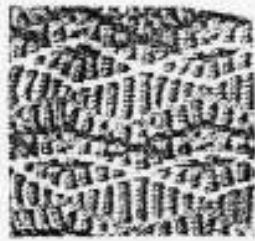
32x104R
116 sts

+28x106R → 280R

60 sts
30R 5 1/4 ST T=5

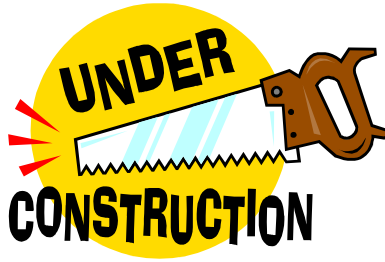
SLIP. 2R M T=6
2R C1
2R C2

40R → ST. ST. T=3
182.015
2.6"



410
280
000

THE WEBSITE



Some of you may have noticed that the website is not available just at present. It is currently undergoing some re-construction work. We will keep you informed as to progress in future newsletters.

Editor

RECIPE FOR FRUIT LOAF

Baked by Mary Campbell at the Oban Weekend

1 cup water
1 cup sugar
1 cup sultanas or mixed fruit
4 ozs margarine
Half a teaspoon baking soda

Boil all ingredients for 15 to 20 mins.
Allow to cool

Then add 2 cups S.R. flour
2 well beaten eggs
2 table spoons of milk

Mix thoroughly and bake in a 2lb baking tin lined with greased paper for 1 hour at 350f/177c

FOR SALE OR WANTED COLUMN

Currently there are no items for this section. If members know of anything which would fit in here please let a member of the committee or the Editor know and we can put it in the next Newsletter.

WORDSEARCH

F	P	R	S	E	D	N	A	L	T	E	H	S
A	U	X	E	D	E	B	N	I	A	M	E	L
I	C	P	B	T	O	O	L	S	D	D	C	I
R	A	G	T	E	N	S	I	O	N	Q	A	P
I	E	N	S	V	O	U	V	K	A	F	L	R
S	T	I	T	C	H	K	O	D	L	Y	H	E
L	B	V	D	E	L	B	A	C	F	I	G	B
E	C	U	T	A	N	D	S	E	W	T	S	B
C	D	C	I	L	Y	R	C	A	S	O	N	I
X	A	W	O	O	L	W	I	N	D	E	R	R
K	D	S	H	J	P	C	L	R	H	S	M	S
C	F	G	T	R	A	B	R	E	T	R	A	G
U	M	P	W	O	R	T	M	A	I	C	K	P
T	N	U	O	C	N	E	E	D	L	E	S	I

**ACRYLIC
CABLE
CAST ON
COUNT
CUT AND SEW
FAIRISLE
GARTER BAR**

**LACE
MAIN BED
NEEDLES
PLY
RIBBER
ROW COUNTER
SHETLAND**

**SLIP
STITCH
TEACUP
TENSION
TOOLS
TUCK
WOOLWINDER**

Anonymous

EDITOR'S NOTES

You will see from the inside cover of this month's newsletter that your new committee are now in place and that the areas have been changed slightly to give better cover around the country. Do contact your local reps with any queries you may have or indeed any suggestions.

Please let me have any items you would like printed in the next or subsequent newsletters. Remember this is your newsletter and we need to make it interesting by sharing all our patterns, hints, tips and perhaps a recipe or two. Don't worry if you do not have a computer or e-mail facilities, write it down on a piece of paper and send it by post and I will sort it out for you.

Margaret Robbie